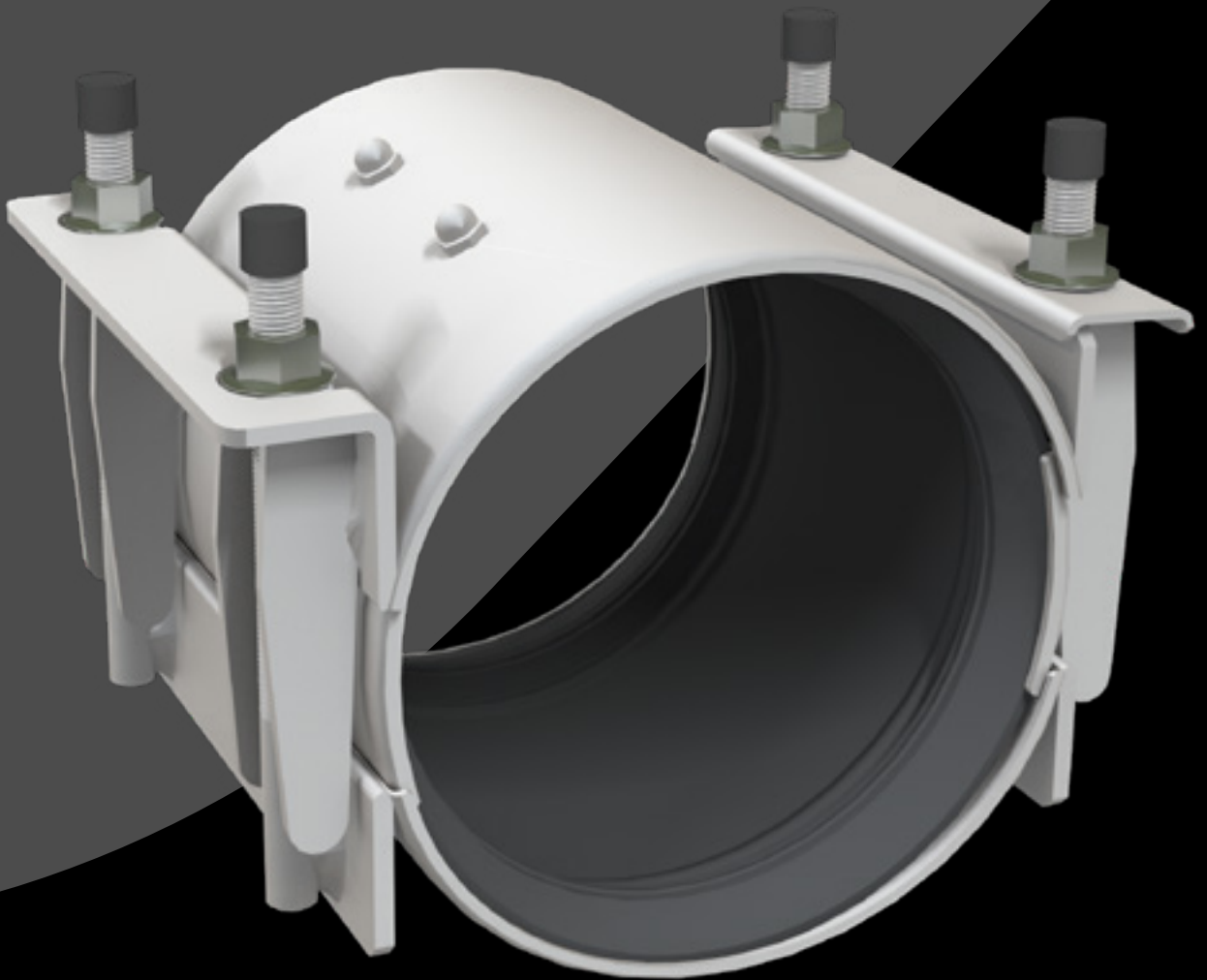


PEW *OX*



Go for the flow

One tool, many solutions

PEWOBAR has developed the ultimate repair coupling for the repair and joining of any type of pipeline. With OX, you have a high quality tool at your fingertips that is quick to install and enables permanent solutions and repairs. For utility and industrial construction companies, OX is the ideal tool to ensure everything flows as it should.

Advantages



Multifunctional:

One tool for both wide range joining and repairing pipes



Efficient:

Quick and easy to install with just a wrench, often without releasing pressure on the pipe



Angular deflection

up to 8°



High quality:

stainless steel, electrolytic zinc plated flanged nuts, deburred and passivated metal parts, made in the Netherlands



Strong:

solid construction suitable for working pressures up to 24 bar



Can be used anywhere:

for any terrain and situation, no loose parts



OX works on all terrains.

This stainless steel repair coupling combines, in an unprecedented way, reliability with multifunctionality. With its high pressure class rating and angular deflection compensation, this repair coupling is perfect for applications in hilly surroundings. Various situations and problems can be remedied in no time.

Applications



joining



flexible connection



weld seams



transitions



horizontal rupture



damage/cracks



replace/install
central section



vertical rupture



rupture due to
subsidence



angular
deflection



corrosion



rupture due to
difference in
height

We ensure an optimal flow



Repair and joining of the following pipe materials

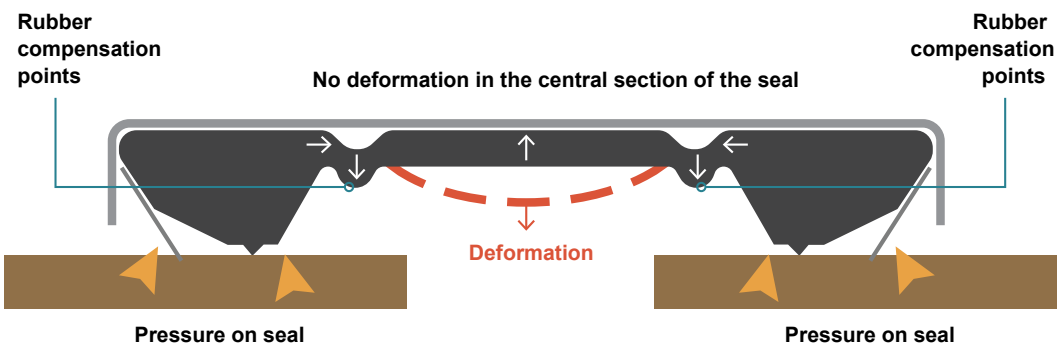
PVC	PE	Cast iron	Steel	Fibre cement	GRP/GRE
-----	----	-----------	-------	--------------	---------

General technical data

suitable for water and gas pipes, and for other applications	entirely made of stainless steel 304	withstands maximum pressure up to 24 bar
temperature tolerance: -40 °C to 60 °C	maximum pipe gap and repair length: OX 140: 100 mm OX 210: 170 mm OX 280: 240 mm	joining and repair of pipes DN 40 to DN 600 (43 mm to 638 mm)
EPDM rubber seal certified for drinking water	accommodates angular deflections up to 8°	pipe diameter differences: up to 76 mm: 8 mm up to 600 mm: 10 mm

Innovative sealing profile

The specially developed sealing profile ensures that the rubber is never forced towards the middle. This prevents cavitation and damage to the pipes and guarantees perfect sealing even on rough surfaces.



Certificates

OX has been extensively tested and certified.



ISO 9001
Quality
guarantee



ISO 14001
Environmentally
conscious

Rubber
seal
certificates

KTW

WRAS

DVGW

W270

ACS

NSF



PEWOBAR

**We make every effort to optimise
your operational flow.**

OX is an innovative product. We are known as a company that exemplifies customer service and quality. A genuine partner for our customers, striving to combine great accessibility with a solution-oriented approach.

Repair Coupling Data Sheets

OX types

OX is available in 3 variants



OX 140



OX 210



OX 280

- Technical details are subject to change.
- Follow fitting/assembly instructions
- Working pressure for industrial and land-based applications with 1.5x safety factor in bars

Repair Coupling Data Sheet — OX140 A2

Article no.	PN	Range	Width	Parts	Gasket	ø diff. mm	C Max	Ang. Defl.	Bolt size	No. Bolts	Nm
140-2POX24A2E43-60	24	43-60	140	AISI 304	EPDM	8	100	8°	M12	4	40
140-2POX24A2E52-64	24	52-64	140	AISI 304	EPDM	8	100	8°	M12	4	40
140-2POX24A2E59-76	24	59-76	140	AISI 304	EPDM	8	100	8°	M12	4	40
140-2POX24A2E70-84	24	70-84	140	AISI 304	EPDM	8	100	8°	M12	4	40
140-2POX24A2E80-96	24	80-96	140	AISI 304	EPDM	8	100	8°	M12	4	40
140-2POX24A2E87-109	24	87-109	140	AISI 304	EPDM	10	100	8°	M12	4	40
140-2POX24A2E104-126	24	104-126	140	AISI 304	EPDM	10	100	8°	M12	4	40
140-2POX24A2E108-133	24	108-133	140	AISI 304	EPDM	10	100	8°	M14	4	40
140-2POX24A2E113-136	24	113-136	140	AISI 304	EPDM	10	75	8°	M14	4	40
140-2POX24A2E121-144	24	121-144	140	AISI 304	EPDM	10	75	8°	M14	4	40
140-2POX24A2E124-146	24	124-146	140	AISI 304	EPDM	10	75	8°	M14	4	40
140-2POX24A2E138-160	24	138-160	140	AISI 304	EPDM	10	75	8°	M14	4	40
140-2POX24A2E147-169	24	147-169	140	AISI 304	EPDM	10	75	8°	M14	4	40
140-2POX16A2E152-174	16	152-174	140	AISI 304	EPDM	10	75	8°	M14	4	40
140-2POX16A2E159-181	16	159-181	140	AISI 304	EPDM	10	75	8°	M14	4	40
140-2POX16A2E164-186	16	164-186	140	AISI 304	EPDM	10	75	8°	M14	4	40
140-2POX16A2E180-202	16	180-202	140	AISI 304	EPDM	10	75	8°	M14	4	40
140-2POX16A2E190-213	16	190-213	140	AISI 304	EPDM	10	75	8°	M14	4	40
140-2POX16A2E207-232	16	207-232	140	AISI 304	EPDM	10	75	8°	M14	4	40
140-2POX16A2E220-242	16	220-242	140	AISI 304	EPDM	10	75	8°	M14	4	60
140-2POX16A2E230-252	16	230-252	140	AISI 304	EPDM	10	75	8°	M14	4	60
140-2POX16A2E236-258	16	236-258	140	AISI 304	EPDM	10	75	8°	M14	4	60
140-2POX16A2E244-267	16	244-267	140	AISI 304	EPDM	10	75	8°	M14	4	60
140-2POX16A2E260-282	16	260-282	140	AISI 304	EPDM	10	75	8°	M14	4	60
140-2POX16A2E263-285	16	263-285	140	AISI 304	EPDM	10	75	8°	M14	4	60
140-2POX16A2E270-293	16	270-293	140	AISI 304	EPDM	10	75	8°	M14	4	60
140-2POX16A2E286-308	16	286-308	140	AISI 304	EPDM	10	75	8°	M14	4	60
140-2POX16A2E294-316	16	294-316	140	AISI 304	EPDM	10	75	8°	M14	4	60
140-2POX16A2E305-327	16	305-327	140	AISI 304	EPDM	10	75	8°	M14	4	60
140-2POX16A2E310-332	16	310-332	140	AISI 304	EPDM	10	75	8°	M14	4	60
140-2POX16A2E322-344	16	322-344	140	AISI 304	EPDM	10	75	8°	M14	4	60
140-2POX16A2E336-358	16	336-358	140	AISI 304	EPDM	10	75	8°	M14	4	60
140-2POX16A2E340-362	16	340-362	140	AISI 304	EPDM	10	75	8°	M14	4	60

Repair Coupling Data Sheet — OX210 A2

Article no.	PN	Range	Width	Parts	Gasket	ø diff. mm	C Max	Ang. Defl.	Bolt size	No. Bolts	Nm
210-2POX24A2E43-60	24	43-60	210	AISI 304	EPDM	8	170	8°	M12	6	40
210-2POX24A2E52-64	24	52-64	210	AISI 304	EPDM	8	170	8°	M12	6	40
210-2POX24A2E59-76	24	59-76	210	AISI 304	EPDM	8	170	8°	M12	6	40
210-2POX24A2E70-84	24	70-84	210	AISI 304	EPDM	8	170	8°	M12	6	40
210-2POX24A2E80-96	24	80-96	210	AISI 304	EPDM	8	170	8°	M12	6	40
210-2POX24A2E87-109	24	87-109	210	AISI 304	EPDM	10	170	8°	M12	6	40
210-2POX24A2E104-126	24	104-126	210	AISI 304	EPDM	10	170	8°	M12	6	40
210-2POX24A2E108-133	24	108-133	210	AISI 304	EPDM	10	170	8°	M14	6	40
210-2POX24A2E113-136	24	113-136	210	AISI 304	EPDM	10	145	8°	M14	6	40
210-2POX24A2E121-144	24	121-144	210	AISI 304	EPDM	10	145	8°	M14	6	40
210-2POX24A2E124-146	24	124-146	210	AISI 304	EPDM	10	145	8°	M14	6	40
210-2POX24A2E138-160	24	138-160	210	AISI 304	EPDM	10	145	8°	M14	6	40
210-2POX24A2E147-169	24	147-169	210	AISI 304	EPDM	10	145	8°	M14	6	40
210-2POX16A2E152-174	16	152-174	210	AISI 304	EPDM	10	145	8°	M14	6	40
210-2POX16A2E159-181	16	159-181	210	AISI 304	EPDM	10	145	8°	M14	6	40
210-2POX16A2E164-186	16	164-186	210	AISI 304	EPDM	10	145	8°	M14	6	40
210-2POX16A2E180-202	16	180-202	210	AISI 304	EPDM	10	145	8°	M14	6	40
210-2POX16A2E190-213	16	190-213	210	AISI 304	EPDM	10	145	8°	M14	6	40
210-2POX16A2E207-232	16	207-232	210	AISI 304	EPDM	10	145	8°	M14	6	40
210-2POX16A2E220-242	16	220-242	210	AISI 304	EPDM	10	145	8°	M14	6	60
210-2POX16A2E233-255	16	233-255	210	AISI 304	EPDM	10	145	8°	M14	6	60
210-2POX16A2E236-259	16	236-259	210	AISI 304	EPDM	10	145	8°	M14	6	60
210-2POX16A2E244-267	16	244-267	210	AISI 304	EPDM	10	145	8°	M14	6	60
210-2POX16A2E260-282	16	260-282	210	AISI 304	EPDM	10	145	8°	M14	6	60
210-2POX16A2E263-285	16	263-285	210	AISI 304	EPDM	10	145	8°	M14	6	60
210-2POX16A2E270-293	16	270-293	210	AISI 304	EPDM	10	145	8°	M14	6	60
210-2POX16A2E280-308	16	280-308	210	AISI 304	EPDM	10	145	8°	M14	6	60
210-2POX16A2E294-318	16	294-318	210	AISI 304	EPDM	10	145	8°	M14	6	60
210-2POX16A2E305-327	16	305-327	210	AISI 304	EPDM	10	145	8°	M14	6	60
210-2POX16A2E310-332	16	310-332	210	AISI 304	EPDM	10	145	8°	M14	6	60
210-2POX16A2E322-344	16	322-344	210	AISI 304	EPDM	10	145	8°	M14	6	60
210-2POX16A2E336-358	16	336-358	210	AISI 304	EPDM	10	145	8°	M14	6	60
210-2POX16A2E340-362	16	340-362	210	AISI 304	EPDM	10	145	8°	M14	6	60
210-2POX16A2E363-385	16	363-385	210	AISI 304	EPDM	10	145	8°	M14	6	60
210-2POX16A2E385-407	16	385-407	210	AISI 304	EPDM	10	145	8°	M14	6	60
210-2POX16A2E413-435	16	413-435	210	AISI 304	EPDM	10	145	8°	M14	6	60
210-2POX16A2E434-466	16	434-466	210	AISI 304	EPDM	10	145	8°	M14	6	60
210-2POX16A2E466-498	16	466-498	210	AISI 304	EPDM	10	145	8°	M14	6	60
210-2POX16A2E490-522	16	490-522	210	AISI 304	EPDM	10	145	8°	M14	6	80
210-2POX16A2E528-560	16	528-560	210	AISI 304	EPDM	10	145	8°	M14	6	80
210-2POX16A2E544-576	16	544-576	210	AISI 304	EPDM	10	145	8°	M14	6	80
210-2POX16A2E578-610	16	578-610	210	AISI 304	EPDM	10	145	8°	M14	6	80
210-2POX16A2E606-638	16	606-638	210	AISI 304	EPDM	10	145	8°	M14	6	80
210-2POX16A2E634-666	16	634-666	210	AISI 304	EPDM	10	145	8°	M14	6	80
210-2POX16A2E650-682	16	650-682	210	AISI 304	EPDM	10	145	8°	M14	6	80
210-2POX16A2E685-717	16	685-717	210	AISI 304	EPDM	10	145	8°	M14	6	80

Repair Coupling Data Sheet — OX280 A2

Article no.	PN	Range	Width	Parts	Gasket	ø diff. mm	C Max	Ang. Defl.	Bolt size	No. Bolts	Nm
280-2POX24A2E43-60	24	43-60	280	AISI 304	EPDM	8	240	8°	M12	8	40
280-2POX24A2E52-64	24	52-64	280	AISI 304	EPDM	8	240	8°	M12	8	40
280-2POX24A2E59-76	24	59-76	280	AISI 304	EPDM	8	240	8°	M12	8	40
280-2POX24A2E70-84	24	70-84	280	AISI 304	EPDM	8	240	8°	M12	8	40
280-2POX24A2E80-96	24	80-96	280	AISI 304	EPDM	8	240	8°	M12	8	40
280-2POX24A2E87-109	24	87-109	280	AISI 304	EPDM	10	240	8°	M12	8	40
280-2POX24A2E104-126	24	104-126	280	AISI 304	EPDM	10	240	8°	M12	8	40
280-2POX24A2E108-133	24	108-133	280	AISI 304	EPDM	10	240	8°	M14	8	40
280-2POX24A2E113-136	24	113-136	280	AISI 304	EPDM	10	215	8°	M14	8	40
280-2POX24A2E121-144	24	121-144	280	AISI 304	EPDM	10	215	8°	M14	8	40
280-2POX24A2E124-146	24	124-146	280	AISI 304	EPDM	10	215	8°	M14	8	40
280-2POX24A2E138-160	24	138-160	280	AISI 304	EPDM	10	215	8°	M14	8	40
280-2POX24A2E147-169	24	147-169	280	AISI 304	EPDM	10	215	8°	M14	8	40
280-2POX16A2E152-174	16	152-174	280	AISI 304	EPDM	10	215	8°	M14	8	40
280-2POX16A2E159-181	16	159-181	280	AISI 304	EPDM	10	215	8°	M14	8	40
280-2POX16A2E164-186	16	164-186	280	AISI 304	EPDM	10	215	8°	M14	8	40
280-2POX16A2E180-202	16	180-202	280	AISI 304	EPDM	10	215	8°	M14	8	40
280-2POX16A2E190-213	16	190-213	280	AISI 304	EPDM	10	215	8°	M14	8	40
280-2POX16A2E207-232	16	207-232	280	AISI 304	EPDM	10	215	8°	M14	8	40
280-2POX16A2E220-242	16	220-242	280	AISI 304	EPDM	10	215	8°	M14	8	40
280-2POX16A2E233-255	16	233-255	280	AISI 304	EPDM	10	215	8°	M14	8	40
280-2POX16A2E236-259	16	236-259	280	AISI 304	EPDM	10	215	8°	M14	8	60
280-2POX16A2E244-267	16	244-267	280	AISI 304	EPDM	10	215	8°	M14	8	60
280-2POX16A2E260-282	16	260-282	280	AISI 304	EPDM	10	215	8°	M14	8	60
280-2POX16A2E263-285	16	263-285	280	AISI 304	EPDM	10	215	8°	M14	8	60
280-2POX16A2E270-293	16	270-293	280	AISI 304	EPDM	10	215	8°	M14	8	60
280-2POX16A2E280-302	16	280-302	280	AISI 304	EPDM	10	215	8°	M14	8	60
280-2POX16A2E294-318	16	294-318	280	AISI 304	EPDM	10	215	8°	M14	8	60
280-2POX16A2E305-327	16	305-327	280	AISI 304	EPDM	10	215	8°	M14	8	60
280-2POX16A2E310-332	16	310-332	280	AISI 304	EPDM	10	215	8°	M14	8	60
280-2POX16A2E322-344	16	322-344	280	AISI 304	EPDM	10	215	8°	M14	8	60
280-2POX16A2E336-358	16	336-358	280	AISI 304	EPDM	10	215	8°	M14	8	60
280-2POX16A2E340-362	16	340-362	280	AISI 304	EPDM	10	215	8°	M14	8	60
280-2POX16A2E363-385	16	363-385	280	AISI 304	EPDM	10	215	8°	M14	8	60
280-2POX16A2E385-407	16	385-407	280	AISI 304	EPDM	10	215	8°	M14	8	60
280-2POX16A2E413-435	16	413-435	280	AISI 304	EPDM	10	215	8°	M14	8	60
280-2POX16A2E434-466	16	434-466	280	AISI 304	EPDM	10	215	8°	M14	8	60
280-2POX16A2E466-496	16	466-496	280	AISI 304	EPDM	10	215	8°	M14	8	60
280-2POX16A2E490-522	16	490-522	280	AISI 304	EPDM	10	215	8°	M14	8	80
280-2POX16A2E528-560	16	528-560	280	AISI 304	EPDM	10	215	8°	M14	8	80
280-2POX16A2E544-576	16	544-576	280	AISI 304	EPDM	10	215	8°	M14	8	80
280-2POX16A2E578-610	16	578-610	280	AISI 304	EPDM	10	215	8°	M14	8	80
280-2POX16A2E606-638	16	606-638	280	AISI 304	EPDM	10	215	8°	M14	8	80
280-2POX16A2E634-666	16	634-666	280	AISI 304	EPDM	10	215	8°	M14	8	80
280-2POX16A2E650-682	16	650-682	280	AISI 304	EPDM	10	215	8°	M14	8	80
280-2POX16A2E685-717	16	685-717	280	AISI 304	EPDM	10	215	8°	M14	8	80
280-2POX12A2E715-747	12	715-747	280	AISI 304	EPDM	10	215	8°	M14	8	80
280-2POX12A2E746-770	12	746-770	280	AISI 304	EPDM	10	215	8°	M14	8	80

PEW *OX*

OX is the answer to
all your pipeline
joining and repair
needs.

Any further questions or projects
where we may be of assistance?
We're here for you.

PEWOBAR GMBH

Barloer Straße 34
D-46414 Rhede Germany
www.pewobar.de